



Big Dutchman.

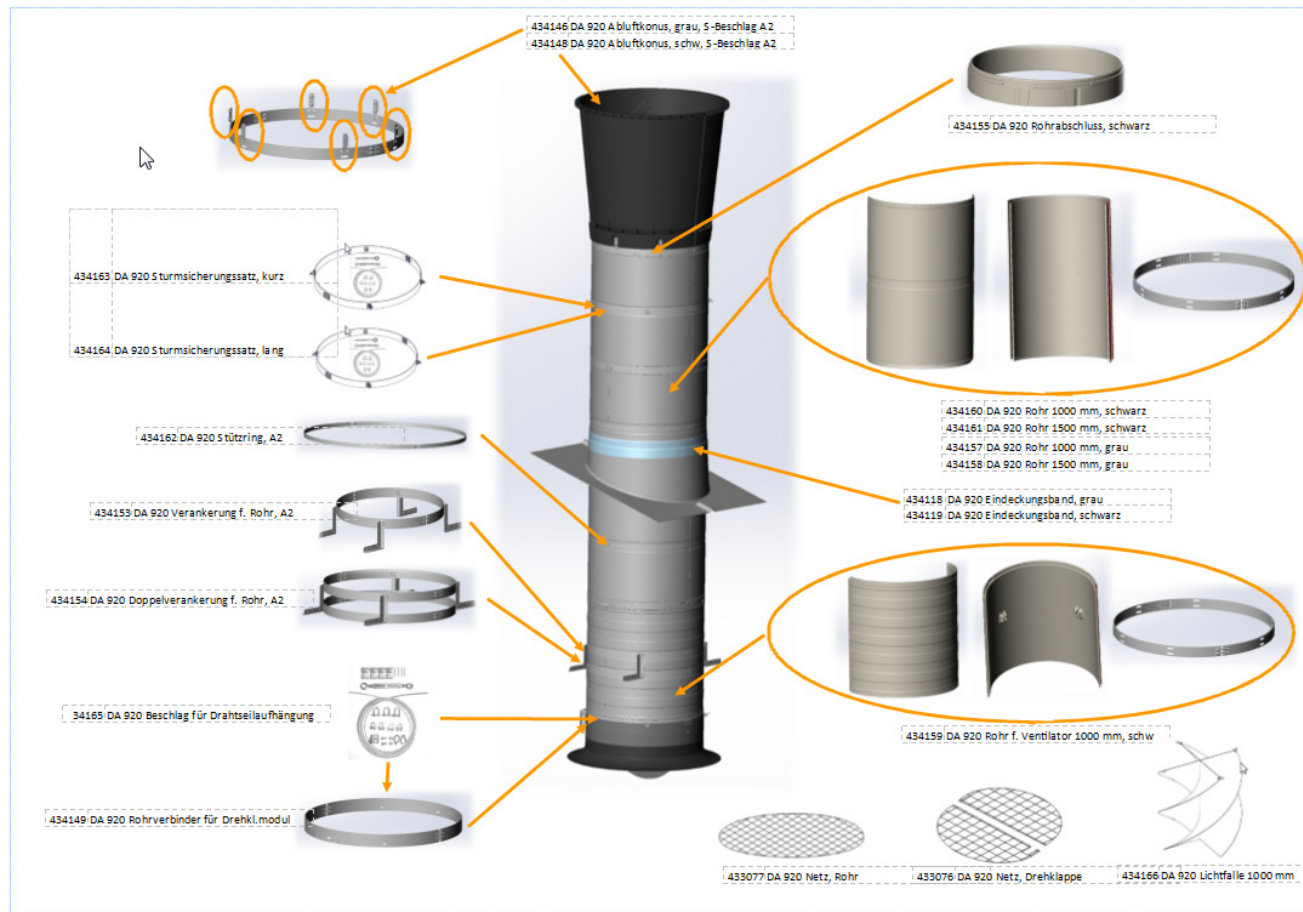
BD exhaust air

CL 920



Big Dutchman.

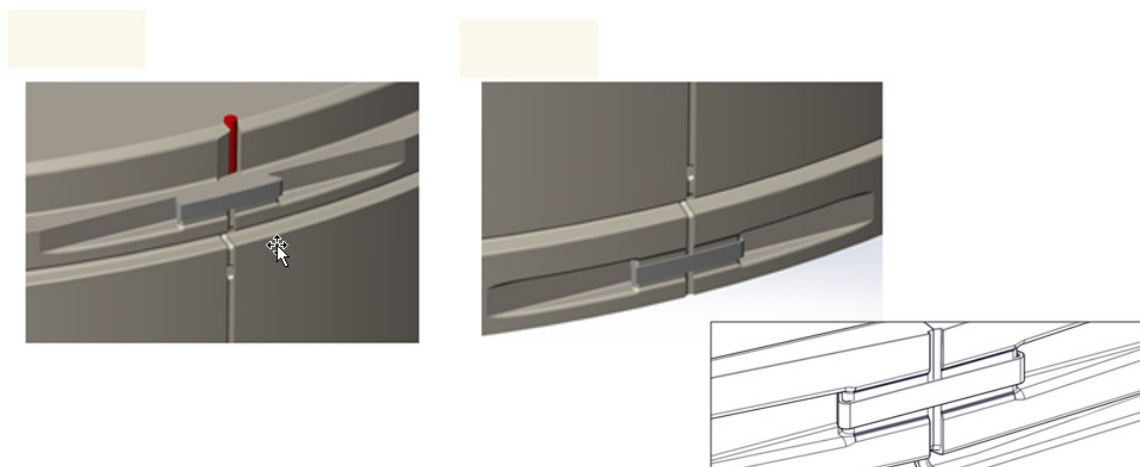
BD chimney CL 920



BD chimney CL 920

To ensure a simple and fast assembly of duct half sections, there is designed a Mounting Clip in stainless steel

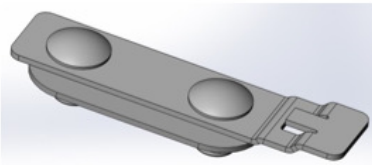
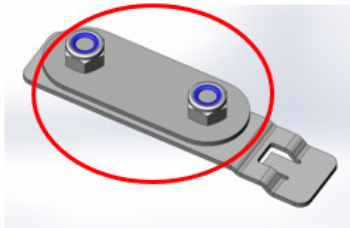
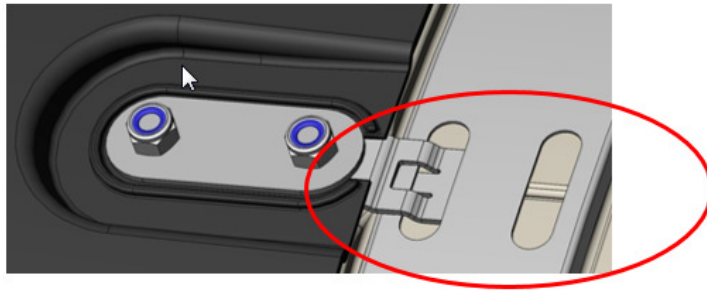
It holds the sections in place during the further installation of the chimney, and until they are proper locked together with the Duct Connector



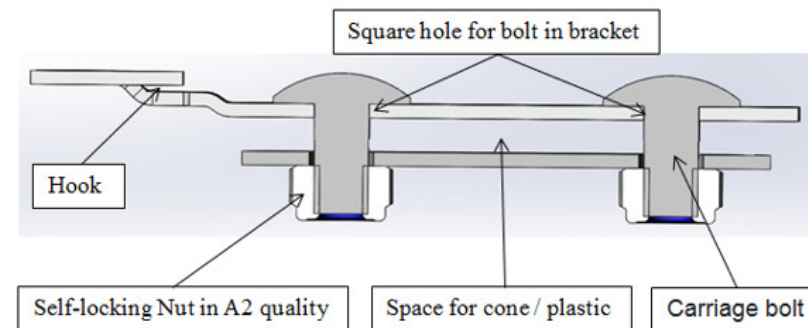


Big Dutchman.

BD chimney CL 920



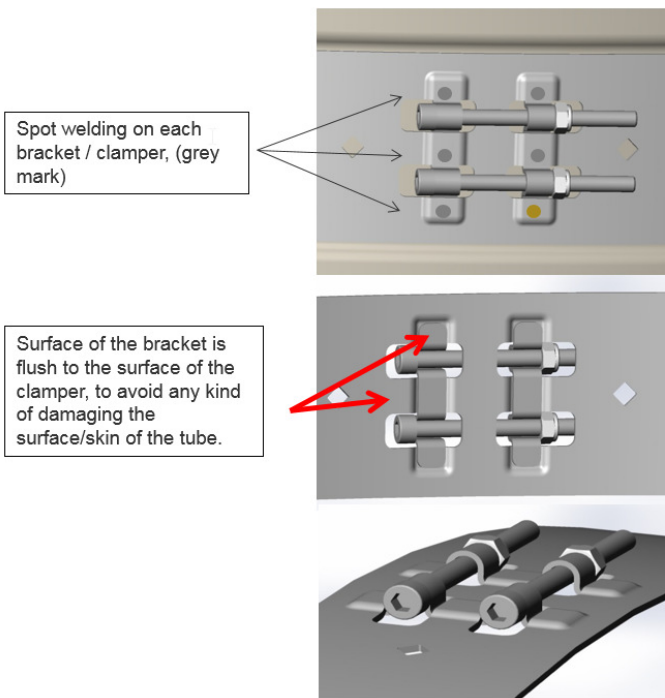
- The Cone is fixed to the Top Ring through six brackets which are hooked in the slots at the Duct Connector. This attachment to the Cone and Connector, means that it is not necessary to drill for screws in the Top Ring.
- The bracket is delivered fit together with the nuts loosely fitted
- The bracket is designed to resist 40 m/sec. constant wind pressure





Big Dutchman.

BD chimney CL 920





Big Dutchman.

BD chimney CL 920

